



UNIVERSAL SIGNAL CONVERTER
4 way isolated - RS485 MODBUS- Datalogger

QA-OMNI



Advanced UNIVERSAL SIGNAL CONVERTER, USB configurable, DIN rail mounting, 4-way galvanically isolated, universal power supply AC/DC, Programmable alarm contact, RS485 Modbus. DATALOGGING via USB with pen drive stick memory and download storage data on excel importable files. RTC Real Time Clock integrated. CURRENT, VOLTAGE, FREQUENCY, POTENTIOMETER, TEMPERATURE (RTD and TC all types).



The images/schemes proposed are to be considered indicative and not binding

INPUT

VOLTAGE: up to 10 Vdc programmable, input impedance 100 KOhm, 1mV resolution.

CURRENT: up to 20 mA programmable, input impedance 20 Ohm, max resolution 2µA.

TEMPERATURE: RTD: Pt100, Pt500, Pt1000, Ni100. 2,3 or 4 wire measure, automatic detection of cable interruption.

TC Types: J, K, R, S, T, B, E, N; automatic detection of cable interruption (-10mV to 70mV).

POTENTIOMETER: from 1000 Ohm to 10 KOhm.

FREQUENCY: from 0,001 Hz to 9,99KHz, mechanical contact, npn 2 and 3 wires, pnp 3 wires with supply of 24 Vdc, namur, photoelectric, Hall sensor, variable reluctance, pulse 24 V, TTL.

OUTPUT

CURRENT: 0...20mA programmable, max load resistance 600 ohm.

VOLTAGE: 0...10V programmable, min load resistance 2 kohm.

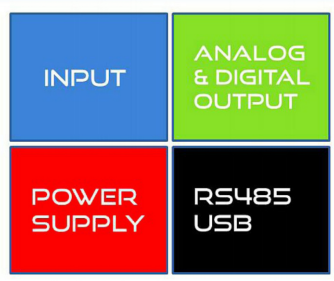
CONTACT ALARM: 5A 230Vac SPDT relay fully programmable by FACILE QA-OMNI.

RS485 MODBUS: bus connection on the base of module by adapter (option) or on terminals. Dip-switch for setting address and baudrate.

Table with technical specifications: POWER SUPPLY, RETRANSMISSION OUTPUT, ABSORPTION, PROTECTION INDEX, ACCURACY, RESOLUTION, THERMAL STABILITY, WORKING TEMPERATURE, STORAGE TEMPERATURE, ISOLATION, HUMIDITY, ALTITUDE, MOUNTING, CONNECTIONS, CE STANDARDS, DIMENSIONS, DATA LOGGER, CONFIGURATION.

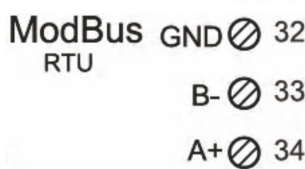
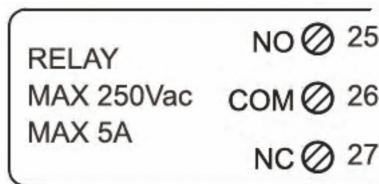
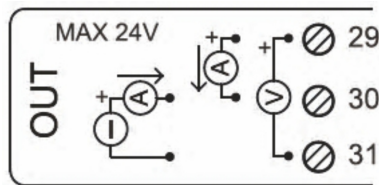
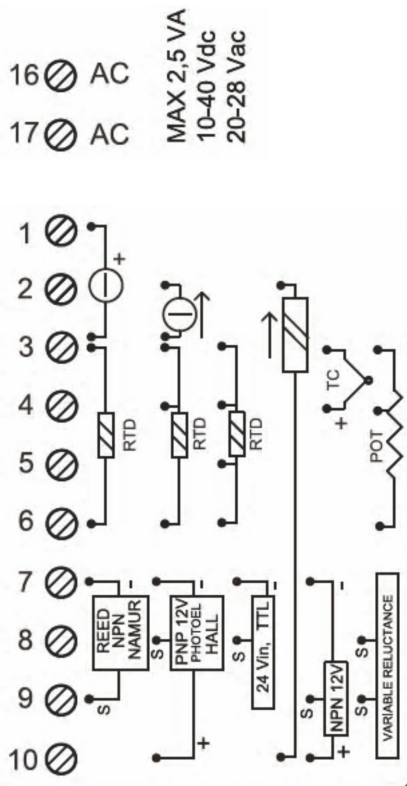
QA- UNIVERSAL SIGNAL CONVERTER 4 way isolated - RS485 MODBUS- Datalogger

4-WAY GALVANIC ISOLATION



INSTRUCTION MANUAL
QA-OMNI
DESCRIPTION:

The QA-OMNI is an isolated universal signal converter, with an analog input (voltage, current, temperature, potentiometer) and a digital input. The module has a programmable analog output (voltage or current) and a digital output (relay). Thanks to the presence of the RS485 serial port can perform advanced functions such as I / O Module with Modbus RTU protocol. The QA-OMNI behaves as a slave device by placing No. 1 AI, No. AO No. 1, No. 1 DI and No.1 DO.

ELECTRICAL CONNECTIONS:
QA-OMNI
INSTRUCTION MANUAL

POWER SUPPLY:

10...40 Vdc or 20...28 Vac - Connectors 16 and 17, or by T-BUS connector (optional tool) on the base of the module (see the picture placed on the bottom of this page).

ANALOG INPUT:

depending on the type of sensor or signal available, make the connection as shown. For example, to connect a 3-wire RTD sensor requires a connection to terminals 3, 4 and 6. The Thermocouple, whatever it is, it requires the connection between terminals 3 and 4.

To connect a potentiometer use terminals 3, 4 and 6.

To make resistance measurements at 2, 3 and 4 wires to follow the wiring diagram for the RTD.

For ACTIVE current input use the connectors 2 (positive) and 3. For PASSIVE current input use connectors 2 (positive) and 10. For Voltage input use connectors 1 (positive) and 3.

DIGITAL INPUT:

the QA-OMNI accepts the input pulses from 0,001 Hz to 9,99 KHz, from mechanical contact, NPN 2 and 3 wire, PNP 3-wire with power supply 24 Vdc, namur, photoelectric sensor, Hall, variable reluctance, pulse 24 V, TTL. For the connection, refer to the diagram as shown.

ANALOG OUTPUT:

for Voltage analog output, connect terminals 31 and 29 (positive).

For ACTIVE current analog output, connect terminals 29 (positive) and 30.

For PASSIVE current analog output, connect terminals 30 (positive) and 31.

Analog output supply: 13 Vdc, max 30mA.

DIGITAL OUTPUT:

relay Output SPDT. Connect terminal 25 for Normally Open mode, terminal 26 for Normally Close. The default setting is Normally Open (NO).

SERIAL OUTPUT RS485:

available on connectors 32, 33 (B-), 34 (A+), or by T-BUS connector to be mounted on the module

T-BUS CONNECTION (OPTION), needs T-BUS connector:

It may be affixed to the accessory T-BUS based on the module to bring both power and serial communication. The number of modules supported by the bus is a function of the power supply used (check the absorption of the modules).



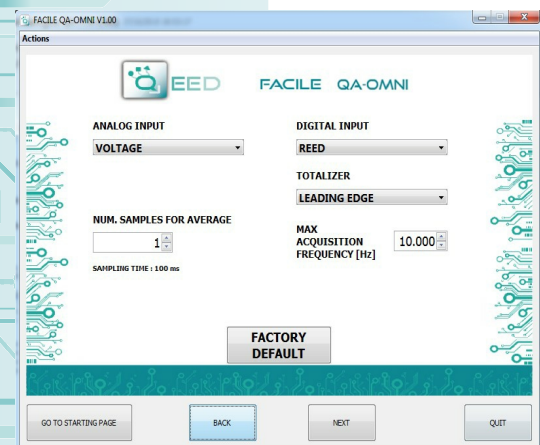
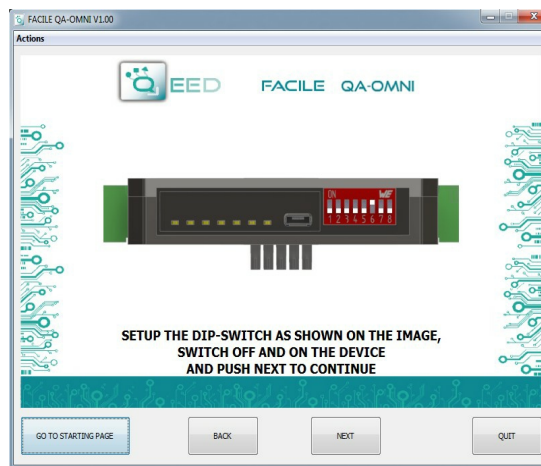
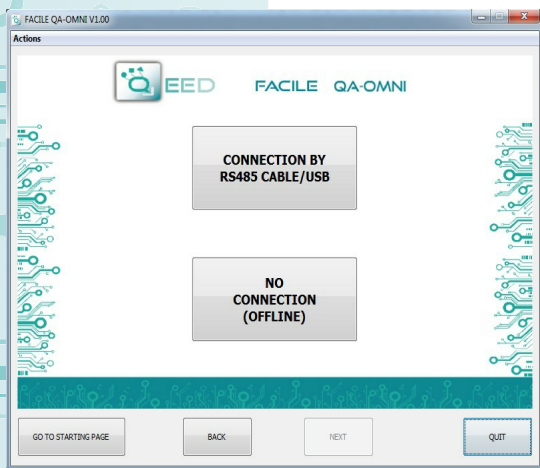
PROGRAMMING THE DEVICE BY SOFTWARE

FACILE QA-OMNI

The programming of the module QA-OMNI may be performed in two different ways:

- via the interface program free FACILE QA-OMNI through the microUSB port on the module or via RS485 connection;
- via the RS485 serial connection (from terminal or T-Bus).

The QA-OMNI has two microprocessors, you can configure the module by connecting it to the USB port of your PC without the power lead, this is possible because the microprocessor that manages the configuration is powered directly from the USB port. To use the program FACILE QA-OMNI, go on our website www.qeed.it section DOWNLOAD / SOFTWARE AND DRIVERS / SIGNAL CONVERTERS / QA-OMNI: CONFIGURATION SOFTWARE, you can install the program on your PC. Once downloaded, install it in the desired directory and run the program.



It is possible to use the program without connecting to the module, in this mode you can SAVE the configuration on your PC, which can then be sent to the QA-OMNI at a later time.

SERIAL PORTS AVAILABLE: check the available COM ports, press the UPDATE button. Your PC will assign a virtual COM connection with the QA-OMNI. Press START CONNECTION WITH THE DEVICE. It will confirm you the connection was successful with the module. If the connection does not happen, please check the RS485 serial connection (A +, B-), the position of the dip-switches (switching off and on the device) and the COM generated automatically by the device.

After connecting, you can proceed with the configuration of the device.

ANALOG INPUT: on the left you find the pull-down menu where you can select the type of input signal: VOLTAGE, CURRENT, POTENTIOMETER, RESISTANCE 400ohm and 4kohm 2, 3, 4 wires, Ni100, PT100, PT500, PT1000 2, 3, 4 wires, TC type J, K, R, S, T, B, E, N.

The QA-OMNI sampled data every 100 msec, you can choose to mediate the input value up to a maximum of 32 samples.

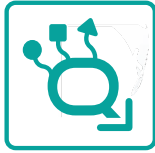
DIGITAL INPUT: at the top right you find the pull-down menu where you can select the type of digital input: REED, NPN 2-wire, 3-wire NPN 24V, 24V 3-wire PNP, NAMUR, PHOTOELECTRIC, HALL, INPUT 24V, TTL, variable reluctance.

TOTALIZER: in the management of the digital input function is always available a TOTALIZER / COUNTER. You can choose totalizer in RISING EDGE or FALLING EDGE of the pulse, the totalizer limit is 2^{32} pulses. If you exceed this limit, the totalizer will restart from Zero and give you, in the same time, an alarm message. It's possible to select the MAXIMUM RATE OF ACQUISITION (value max 10,000 Hz), a parameter useful in case you do not want to consider the presence of fast pulses during an acquisition at low frequency. Please consider that the Totalizer don't save the pulse in the device memory, so if you switch off the device the counter will restart from Zero (not retentive memory).

FACILE QA-OMNI

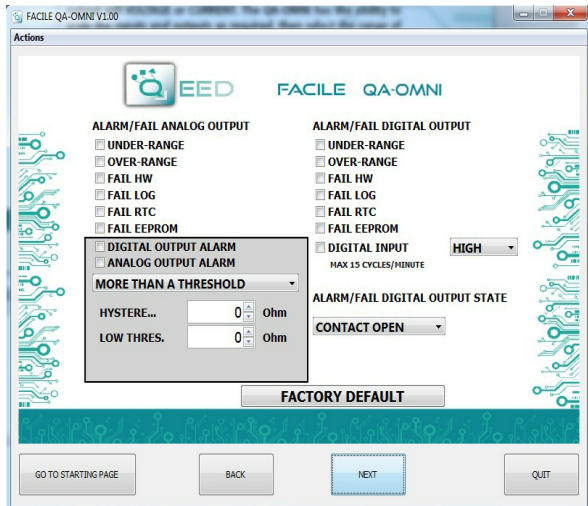
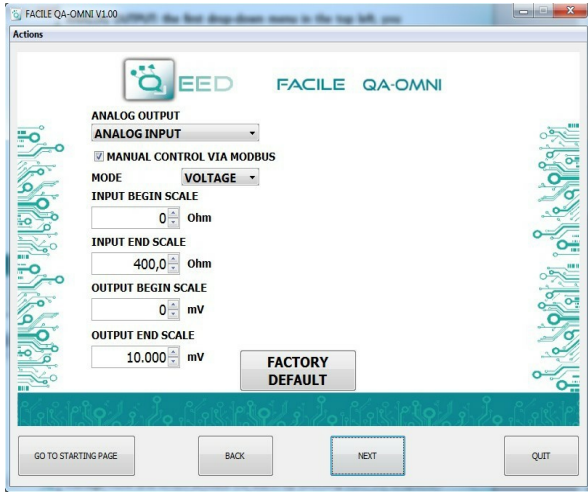
PROGRAMMING THE DEVICE BY SOFTWARE





PROGRAMMING THE DEVICE BY SOFTWARE FACILE QA-OMNI

FACILE QA-OMNI PROGRAMMING THE DEVICE BY SOFTWARE



ANALOG OUTPUT: The first drop-down menu in the upper left allow you to associate the analog output to a single selectable ANALOG INPUT (V, I, Temperature), FREQUENCY, PERIOD, TOTALIZER. The mode of the analog output is VOLTAGE or CURRENT. The QA-OMNI has the ability to scale the input and output as required, then select the measurement range of input (INPUT BEGIN SCALE and INPUT END SCALE) to assign to the analog output signal (OUTPUT BEGIN SCALE and OUTPUT END SCALE). Depending on the choices made in the two menu will change the units of measurement values in the input and output. If you select the MANUAL CONTROL VIA MODBUS, you can manage the module as if it were an AO (Analog Output), thus freeing the analog output from the input selected. The analog output will be handled via RS485 Modbus RTU (see register map).

ALARM/ FAIL ANALOG OUTPUT: It is possible to use the analog output to control any supervening anomaly Hardware HW FAIL, FAIL RTC Real Time Clock anomaly that stores the date and time, FAIL EEPROM for the anomaly on the microprocessor, FAIL LOG if an anomaly occurred during data acquisition, UNDER RANGE scale of measurement set, OVER RANGE scale of measurement set. It is possible to select multiple items in the menu. In case of alarm the analog output will go to 21mA or 10.5 V depending on the selection made in the previous window.

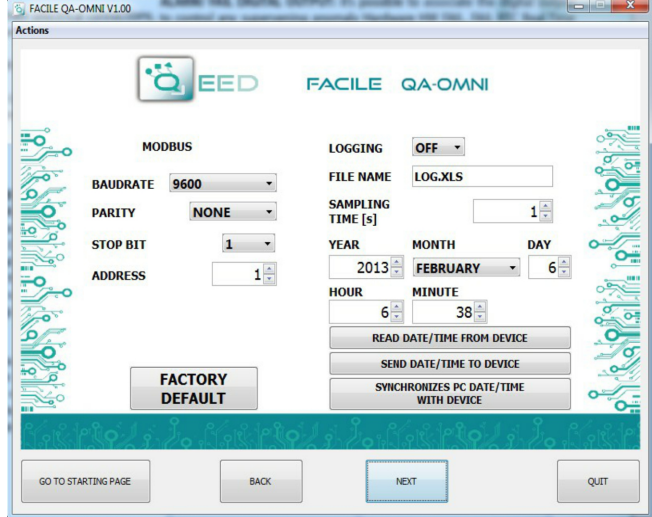
ALARM WINDOW: You can activate the ALARM functionality (in the gray box), on the digital output or on the analog output, or both simultaneously. In this window you can manage HOW and WHEN activate the alarm by selecting the options from the dropdown menu: MORE THAN A THRESHOLD, LESS THAN A THRESHOLD, NOT BETWEEN TWO THRESHOLDS, BETWEEN TWO THRESHOLDS. We therefore have the possibility to insert the values of THRESHOLD (Upper and Lower) and the value of HYSTERESIS. In the case where it is selected the value of a higher threshold is below, the alarm switched off at the threshold value minus the value of hysteresis. In the event that you have chosen the value of a minor threshold exceeds the threshold plus the hysteresis value, the alarm switch off. In the case where it is selected, the between two thresholds case you have selected Not included between two thresholds, the hysteresis is internal.

FAIL MESSAGE/ ANOMALY :
FAIL HW: problems in the measurement chain (electrical connections, microprocessor that manages the measurement, sensor disconnected or faulty).
FAIL LOG: problem on recording data (without the availability of stick usb memory stick usb not recognized).
FAIL RTC: problem on backup battery (dead or defective).
EEPROM FAIL: problem microprocessor configuration (not calibrated module, takes no configuration).

MODBUS COMMUNICATION: This is the last window of the device configuration. The left column contains the parameters to be set for the communication speed BAUDRATE (from 1200 to 115200), the PARITY (None, Odd, Even), the STOP BIT (1 or 2), the Modbus address to be assigned to the device. You do not need to configure these parameters for the use of the module with digital / analog output. It is possible to use the module with RS485 serial output with Modbus output analog and digital simultaneously.

LOGGING: On the right side of the window you can enable the feature LOG for the acquisition of data on usb pendrive. You can name the log file by associating the extension. Xls., Xlsx., Csv., Txt., Dat. Logs. The default file is in text format. The minimum sampling time is 1 second, the maximum is about 18 hours.

ALARM/ FAIL DIGITAL OUTPUT: It is possible to use the digital output to control any supervening anomaly Hardware HW FAIL, FAIL RTC Real Time Clock anomaly that stores the date and time, FAIL EEPROM for the anomaly on the microprocessor, FAIL LOG if an anomaly occurred during data acquisition, UNDER RANGE scale of measurement set, OVER RANGE scale of measurement set. It is possible to select multiple items in the menu. The alarm can be associated with the state of the digital input (HIGH or LOW) for up to 15 cycles per minute. STATE DIGITAL ALARM / FAIL allows you to define the status of contact in case of alarm (CONTACT OPEN or CLOSED).





DATA LOGGING

QA-OMNI

The QA-OMNI provides, on a local memory type PEN DRIVE USB (USB KEY) connected to the module via the microUSB, a series of information concerning the operation of the module, alarm status, type of input, the output type, the reading of the measured data, the measure of the output value from the module.

For each row correspond to a precise time reference. The module is equipped with an RTC Real Time Clock powered by a backup battery that lets you record data with YEAR / MONTH / DAY / HOUR - MIN - SEC.

EXAMPLE OF LOG FILE: for Thermocouple sensor type J, 0-10V output, one sample per second:

Serial Number	Data (yyyy-mm-dd) & Time	Status ID	Analog Input	Totalizer	Period (usec)	Frequency (Hz)	Analog Output	Input type	Output type
12345678	2014/03/12-14-23-25	0	27.36	0	123456	0,000008	359	21	0
12345678	2014/03/12-14-23-26	0	27.36	0	123457	0,000008	359	21	0
12345678	2014/03/12-14-23-27	0	27.36	0	123458	0,000008	359	21	0
12345678	2014/03/12-14-23-28	0	27.36	0	123459	0,000007	359	21	0

The first number listed is the SERIAL NUMBER of the module, which allows it to be uniquely identified. The

second column give you information about: DATE (YEAR / MONTH / DAY / HOUR - MIN - SEC).

It is then reported the STATUS ID (Registry STATE) in binary mode to 16 bit. The binary number corresponds to the Modbus register 40005 that represents the state of the machine (Status: bit 1 = fail global, bit 2 = alarm, bit 3 = OVER RANGE, bit 4 = UNDER RANGE, bit 5 = din status, bit 6 = dout status, bit 7 = fail hw, bit 8 = fail log, bit 9 = fail RTC, bit 10 = fail EEPROM, bit 11 = fail sensor).

The fourth column we find the information from ANALOG INPUT: voltage, current, temperature, potentiometer or resistor.

ANALOG OUTPUT: the value uA or in mV output of the module. This value follows the setting made via FACILE.

TOTALIZER: show you the number of pulse received from digital input.

PERIOD MEASUREMENT: Period measurement in usec. Without any connection on digital input this value converges to infinity.

FREQUENCY MEASUREMENT : Obtained from the measurement of the period, expressed in Hz. If it is not connected to the input frequency will lead to zero.

INPUT TYPE: referred to the Modbus Register 101 that indicate the type of the Input sensor (Analog Input type : value 0=Voltage,1=Current, 2=Potentiometer, 3=Resistor400-2W,4=Resistor400-3W,5=Resistor400-4W, 6=Resistor4000-2W,7=Resistor4000-3W,8=Resistor4000-4W, 9=NI100-2W, 10=NI100-3W, 11=NI100-4W, 12=PT100-2W, 13=PT100-3W, 14=PT100-4W, 15=PT500-2W, 16=PT500-3W, 17=PT500-4W, 18=PT1000-2W, 19=PT1000- 3W, 20=PT1000-4W, 21=TC J, 22=TC K, 23=TC R, 24=TC S, 25=TC T, 26=TC B, 27=TC E, 28=TC N).

OUTPUT TYPE: referred to the Modbus Register 106 that indicate the output configuration (Output Analog mode: bit 0=Voltage/Current, bit 1-2=analog input,frequency, period, totalizer, bit 3 = fail UNDER RANGE, bit 4 = fail OVER RANGE, bit 5 = fail hardware, bit 6 = fail log, bit 7 = fail RTC, bit 8 = fail EEPROM, bit 9 = fail alarm, bit 10-11 = 1 threshold high/1 threshold low/2 thresholds external/2 thresholds internal , bit 12 = Manual mode).

AVAILABLE ON THE WEBSITE www.qeed.it the MACRO for charge the .csv file logged directly on a Excel file.

HOW TO IMPORT LOG DATA FROM EXCEL VERSION BEFORE 2003:

It's possible to import the data stored on the USB Memory Stick at any time (even if the log is not finished). Once you open the file with Excel (or Open Office), you will have to act on the functionality of the program for wrapping the data as described above. To do this, you can perform the following steps: Select the first column, go to the option data, click on TEXT COLUMN, then choose the option that provides for the separation of the data by tabs or commas, the next step endorse the option POINT and COMMA. Following the procedure as soon as you get the data displayed in columns.

QA-OMNI

DATALOGGING





MODBUS REGISTER MAP

QA-OMNI

ADDRESS LIST BASE 1 (40001) MICROPROCESSOR'S REGISTERS BASE 0 (0000) EXAMPLE _ to read register 40003 (address device = 1) Tx: <01> <03> <00> <02> <00> <01> <25> <CA>

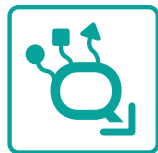
REMARKS:

- Modbus connections: A+ and B-;
• Modbus Register reference: with reference to the logical address, for ex. 40010, corresponds to physical address n°9 as per Modbus RTU standard
• Modbus functions supported: 3 (Read multiple registers), 6 (Write single), 16 (Write multiple);
• Any changes made by dip-switch required to switch off the power supply.

QA-OMNI

MODBUS REGISTER MAP

Table with 7 columns: Register Name, Comment, Register Type, R/W, Default Value, Range, Modbus Address. Rows include Machine ID, Firmware ID, ID, Status, Input Value, Totalizer, Output Value, Period, Frequency, Cold Junction Temp, TC read, Digital Output, Dip-switch status, Third wire resistance, Analog input type, Digital Input type, Temperature mode, Totalizer mode, Digital Input filter, Output Analog mode.

**MODBUS REGISTER MAP****QA-OMNI**

Register Name	Comment	Register Type	R/W	Defau	Range	Modbus Address
Output Analog Input Begin scale	Output Analog Input Begin Scale	FLOAT (MSW)	R/W	0.0		40107
						40108
Output Analog Input End scale	Output Analog Input End Scale	FLOAT (MSW)	R/W	10000.0		40109
						40110
Output Analog Begin scale	Output Analog Begin Scale	UNIT16	R/W	0	0...65535	40111
Output Analog End scale	Output Analog End Scale	UNIT16	R/W	10000	0...65535	40112
Digital Output	Digital Output : bit 0 =default value, bit 1 =fail ur, bit 2 = fail or, bit 3 fail hw, bit 4 = fail log, bit 5 = fail rtc, bit 6 fail eeprom, bit 7 = fail alarm, bit 8 = fail din, bit 9 = din/din inv, bit 10 =low/high	UNIT16	R/W	0		40113
AlarmLow Trip value	Alarm Low trip value	FLOAT (MSW)	R/W	0.0		40114
						40115
Alarm High Trip value	Alarm High trip value	FLOAT (MSW)	R/W	0.0		40116
						40117
Alarm Hysteresis value	Alarm Hysteresys value	FLOAT (MSW)	R/W	0.0		40118
						40119
Modbus Address	Modbus address +parity +stopbits : MSB Modbus address, bit 0-1 =parity none/odd/even, bit 2 =stop bits 1/2	UNIT16	R/W	256		40120
Modbus Baudrate	Modbus Baudrate : value 0=1200, 1=2400, 2=4800, 3=9600, 4=19200, 5=38400, 6=57600, 7=115200	UNIT16	R/W	3	0...7	40121
Log mode	Log mode : bit 0=disabled/enabled	UNIT16	R/W	0		40122
Log sample time	Log sample time (sec)	UNIT16	R/W	1	1...65535	40123
Log name	Log name 15 letters max	UNIT16	R/W	0		40124
Log name	Log name 15 letters max	UNIT16	R/W	0		40125
Log name	Log name 15 letters max	UNIT16	R/W	0		40126
Log name	Log name 15 letters max	UNIT16	R/W	0		40127
Log name	Log name 15 letters max	UNIT16	R/W	0		40128
Log name	Log name 15 letters max	UNIT16	R/W	0		40129
Log name	Log name 15 letters max	UNIT16	R/W	0		40130
Log name	Log name 15 letters max	UNIT16	R/W	0		40131
RTC Year	RTC Year	UNIT16	R/W		2000...2099	41001
RTC Month	RTC Month	UNIT16	R/W		1...12	41002
RTC Day	RTC Day	UNIT16	R/W		1...31	41003
RTC Hour	RTC Hour	UNIT16	R/W		1...23	41004
RTC Minute	RTC Minute	UNIT16	R/W		0...59	41005
RTC Second	RTC Second	UNIT16	R/W		0...59	41006
Command	Command : value 1=Reset, 2=Save Cfg to EEPROM, 3=Set Factory CFG, 4=Reset Tot., 5=Load Tot.	UNIT16	R/W			42001
Command 1	Command parameter 1	UNIT16	R/W			42002
Command 2	Command parameter 2	UNIT16	R/W			42003

QA-OMNI

MODBUS REGISTER MAP

Upgrade FIRMWARE:

The QA-OMNI is designed to upgrade the firmware via the USB port using a standard pen drive where the file will be placed.

The firmware will allow you to implement the functionality of the card and correct any anomalies that may occur.

In order to upgrade the firmware simply, remove power from the module, insert the pen drive with the file, restore power, at this point the card will automatically discharge the file and update the firmware without altering the configuration loaded during programming.

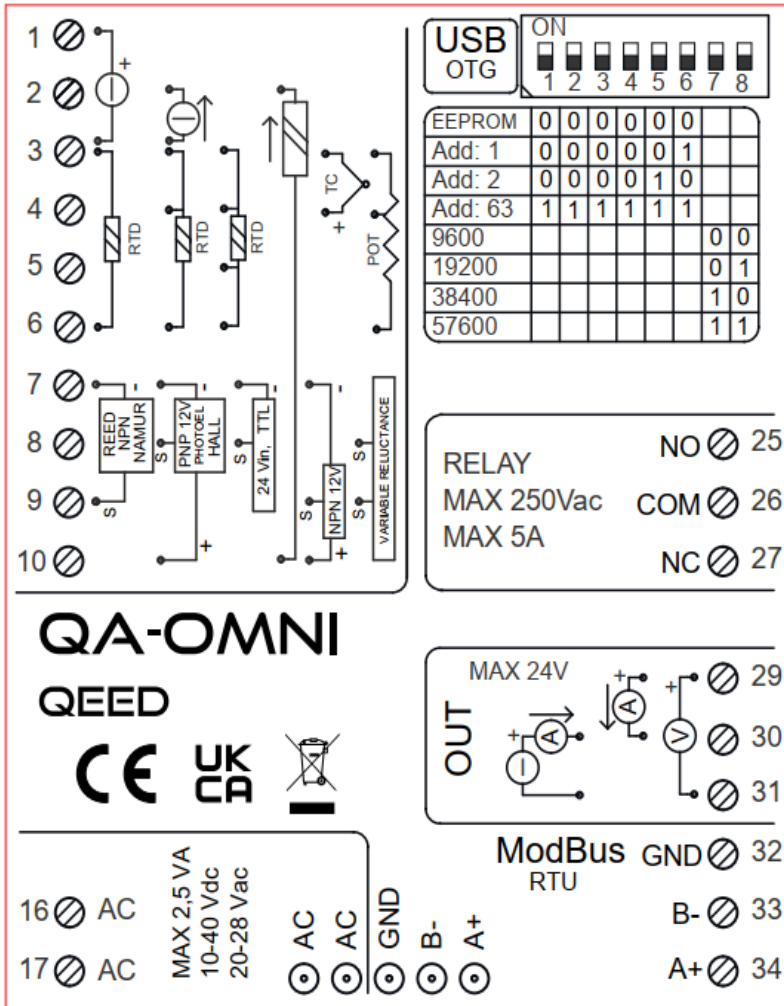
During the update phase the LED light will be intermittent FAIL.



QUICK GUIDE

QA-OMNI

QA-OMNI



MODBUS ADDRESS CONFIGURATION AND BAUD RATE BY DIP-SWITCH

Through the dip-switch on the front panel of the module, you can change the Modbus address and baud rate. In the case in which all the dip switches are set to zero, the module will take the calibration from EEPROM, otherwise it will take parameters from a dip-switch. In order to assign addresses more than 62 assignments you need to take advantage of the interface software FACILE QA-OMNI. In order to assign values of baud rates different from those selectable dip you should take advantage of the interface software FACILE QA-OMNI. For changing the addresses and the baud rate it can also be done by writing directly on the related registers.

POWER SUPPLY:

10...40 Vdc or 20...28 Vac - Connectors 16 and 17, or by T-BUS connector (optional tool) on the base of the module.

POWER SUPPLY by T-BUS CONNECTION (T-BUS connector required):

It is possible to mount the accessory T-BUS to carry both power and serial communication. The number of modules supported by the function of the power supply bus is used (check the absorption of the modules).

INTERFACE PROGRAM FACILE QA-OMNI

FACILE QA-OMNI is the configuration software for QA-OMNI module.

The software is free and downloadable from the website: www.qeed.it

To communicate with the module you have to connect via USB port directly on your PC.

It is possible to configure the module via RS485 through the register map contained on this manual.

QUICK GUIDE

LEDS - FRONT SIGNALS:

Power: power presence on the device.

Fail: presence of a failure/error on the device. It is activated in the case have been activated by FAIL messages on FACILE QA-OMNI. One or more events FAIL are active.

Rx, Tx: the module is communicating via RS485(LED blinking).

Din: digital input active.

Dout: digital output active.

MOUNTING INSTRUCTIONS:

To mount the card on DIN rail, we recommend to place the top of the form on the edge of the bar omega, then pushing the bottom until it clicks. The module is equipped with a slider fastening that will be pushed forward in order to ensure the perfect fastening of the module on the bar.

NOTE: through the hole on the case of QA-OMNI (shown in the figure), you can access an internal DIP SWITCH. Turning up the "DIP 1" you can activate the dynamic terminating of the Modbus.

